

Type:SDFH2D10

◆ Product Description

- 3.0×3.0mm Max.(L×W), 1.0mm Max. Height.
- Inductance Range: 1.0~22.0 μ H
- Rated current (A):0.28~1.40
- In addition to the standards versions shown here,
- custom inductors are also available to meet your exact requirements.

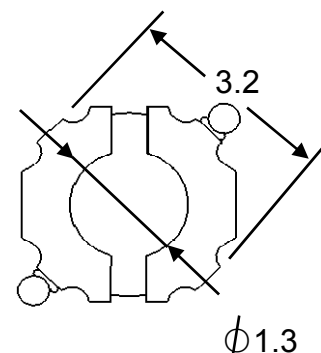
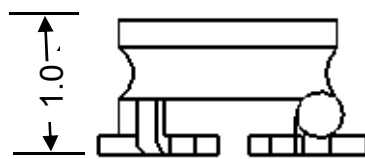
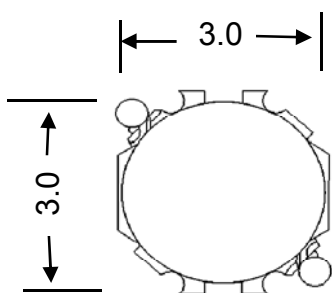
◆ Feature

- Automatic process
- New designed terminal for low cost.
- Low profile and high current
- Ideal for digital equipment and hand phone of new generation.
- RoHS compliant

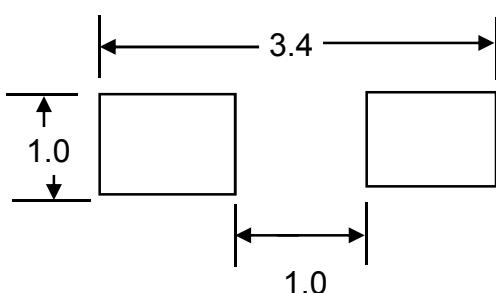
◆ Applications

- Hand phone of new generation
- DSC,DVC,PDA,MP3,Hard disk drives products.
- DC to DC converters ,etc.

◆ Dimensions (mm) General Tolerance:±0.2



◆ Land Pattern (mm)

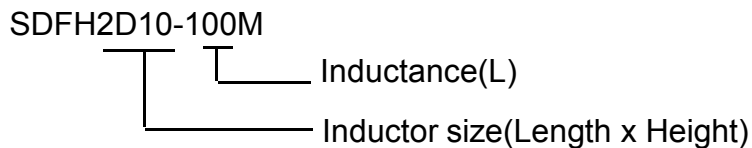


Type:SDFH2D10

◆ Specification

Suntek Part Number	System code	Inductance (μH)	Test Freq. (0.1V)	DCR mΩ Max.(Typ.)	Saturation Rated (A)Max.	Temperature Rise Current (A)Max.
SDFH2D10-1R0N		1.0	100KHz,1v	65(50)	1.40	1.50
SDFH2D10-1R2N		1.2	100KHz,1v	85(65)	1.30	1.40
SDFH2D10-1R5N		1.5	100KHz,1v	100(75)	1.20	1.30
SDFH2D10-2R2N		2.2	100KHz,1v	130(100)	1.10	1.10
SDFH2D10-2R7N		2.7	100KHz,1v	170(130)	0.95	1.00
SDFH2D10-3R3N		3.3	100KHz,1v	190(145)	0.87	0.90
SDFH2D10-4R7N		4.7	100KHz,1v	240(185)	0.75	0.80
SDFH2D10-5R6N		5.6	100KHz,1v	295(225)	0.68	0.75
SDFH2D10-6R8N		6.8	100KHz,1v	320(245)	0.60	0.70
SDFH2D10-8R2N		8.2	100KHz,1v	415(320)	0.55	0.65
SDFH2D10-100M		10.0	100KHz,1v	480(370)	0.50	0.60
SDFH2D10-120M		12.0	100KHz,1v	585(450)	0.37	0.55
SDFH2D10-150M		15.0	100KHz,1v	650(500)	0.33	0.50
SDFH2D10-180M		18.0	100KHz,1v	735(565)	0.30	0.45
SDFH2D10-220M		22.0	100KHz,1v	1040(800)	0.28	0.42

※Description of Part Name



- 1.L tested by Agilent 4284A Precision LCR Meter
- 2.DCR tested by Milli-ohm meter
- 3.Electrical specifications at 25°C
- 4.Inductance tolerance:M= ±20% ,N= ±30%