



## Multilayer Chip Varistor Array <Type:SMVA-R Series>

### Type:SMVA-R2082

#### ◆ Product Description

- 2.15×1.35 mm Max.(L×W),0.95 mm Max. Height.
- Typical Capacitance: 10~50pF
- In addition to the standards versions shown here, custom inductors are also available to meet your exact requirements.

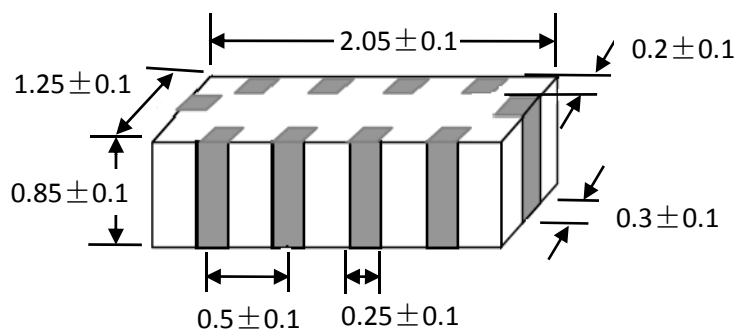
#### ◆ Feature

- R-C composite circuit structure ,availing transient voltage protection and EMI suppression in 4 lines b one chip
- Excellent clamping ratio and quick response time (<0.5ns)

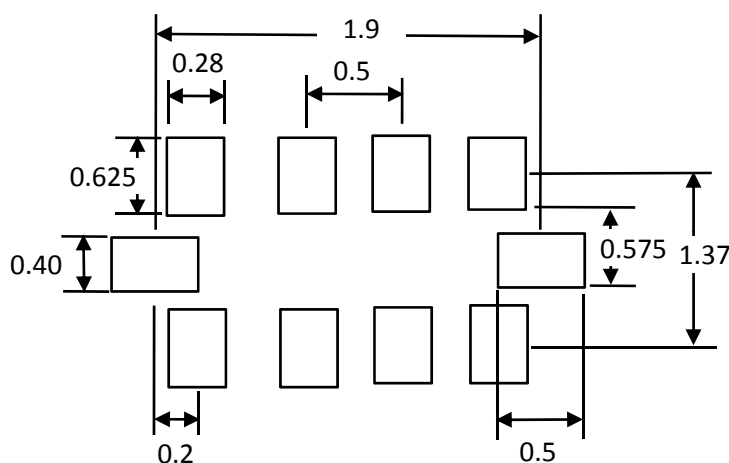
#### ◆ Application

- LCD module and I/O line Transient voltage protection or ESD protection,such as mobile Phone ,PDA, LCD TV, etc

#### ◆ Dimensions (mm)



#### ◆ Land Pattern (mm)

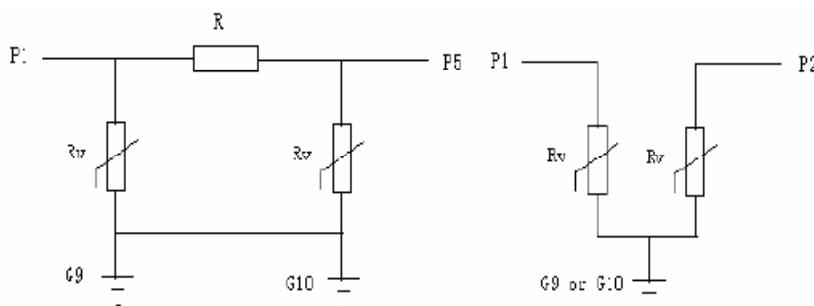
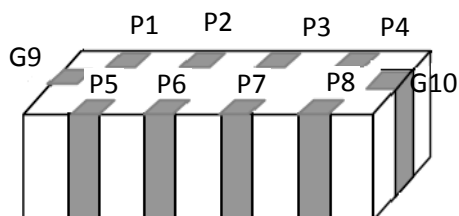




## Multilayer Chip Varistor Array <Type:SMVA-R Series>

### Type:SMVA-R2082

#### ◆ Equivalent circuit



P1,P2,P3,P4:In(out)

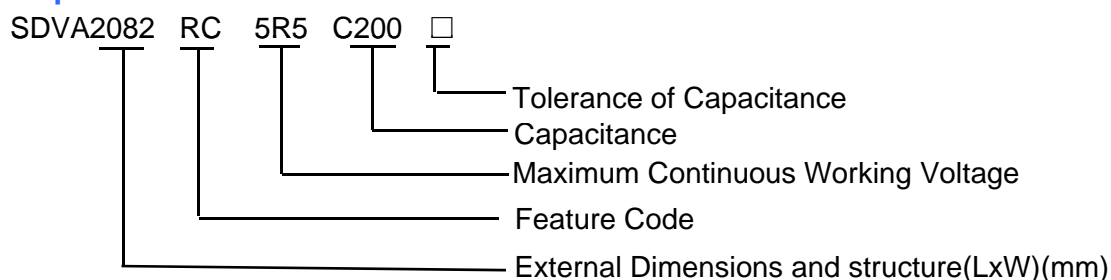
P5,P6,P7,P8:Out(in)

G9,G10: Ground

#### ◆ Specification

Suntek Part Number	System Code	Max.Working Voltage		DCR( $\Omega$ )	Varistor Voltage	Max.Clam ping Voltage		Rated Single Pulse Transient	Cut-off Frequency	Typical Capacitance
Test Condition		<20 $\mu$ A		/	@1mA DC			Peak Current 8/20 $\mu$ s	/	@0.5Vrms,1 MHz
		DC	AC RMS			8/20 $\mu$ s	ESD			
SMVA2082RC5R5C500		5.5	4.0	100 $\pm$ 30%	10~14	18	23	10	50	50
SMVA2082RA140C100□		14	10.0	30 $\pm$ 30%	16~22	30	39	2	100	10
SMVA2082RB140C100□		14	10.0	50 $\pm$ 30%	16~22	30	39	2	100	10
SMVA2082RC140C100□		14	10.0	100 $\pm$ 30%	16~22	30	39	2	100	10
SMVA2082RD140C100□		14	10.0	10 $\pm$ 30%	16~22	30	39	2	100	10
SMVA2082RA180C150□		18	12.7	30 $\pm$ 30%	22~28	40	48	2	100	15
SMVA2082RB180C150□		18	12.7	50 $\pm$ 30%	22~28	40	48	2	100	15
SMVA2082RC180C150□		18	12.7	100 $\pm$ 30%	22~28	40	48	2	100	15
SMVA2082RD180C150□		18	12.7	10 $\pm$ 30%	22~28	40	48	2	100	15

#### ※Description of Part Name



Note:

1. Operating Temperature is -55℃~+125℃.
2. Vc,Maximum peak voltage across the varistor measured at 1A 8/20  $\mu$  s impulse current.
3. Vc,Maximum peak voltage across the varistor measured at a 30ns after initiation of pulse on IEC61000-4-2 30/
4. Ip,Maximum peak current applied at 8/20  $\mu$  s surge impulse current without varistor failure.
5. □:Please specify the capacitance tolerance code (N= $\pm$ 30%,Y=+100%~-50%,G=Maximum)

Please refer to the sales offices on our website for a representative near you  
www.suntekelec.com