

## Type:SMCMA2012

### ◆ Product Description

- 2.2×1.4 mm Max.(L×W),0.9 mm Max. Height.
- DCR Range: 1.7±20%(Ω)
- In addition to the standards versions shown here, custom inductors are also available to meet your exact requirements.

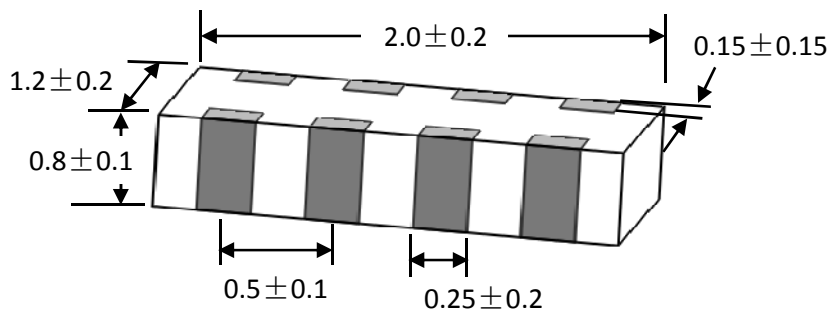
### ◆ Feature

- . Integrated two common mode choke coils
- . Effective for suppressing common mode noise at high frequency
- . Excellent solderability characteristics
- . Compact design

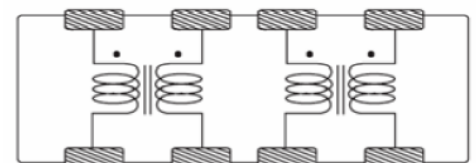
### ◆ Application

- . Common mode noise suppression of differential signal lines in high speed and high-density digital equipments such as IEEE1394,LVDS, Digital Camera, Scanner,etc
- . Digital audio and video equipment such as PDAs,DSC,DVC,CD player ,DVD player,MD player , etc

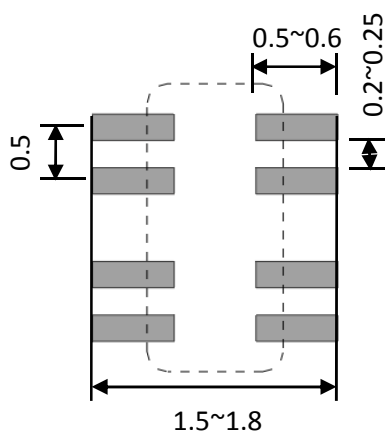
### ◆ Dimensions (mm)



### Equivalent Circuit



### ◆ Land Pattern (mm)



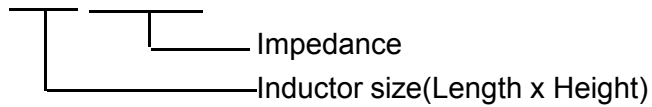
## Type:SMCMA2012

### ◆ Specification

Suntek Part Number	System Code	Common Mode Impedance ( $\Omega$ )	differential Mode Insertion Loss (dB)	Max. DC R( $\Omega$ )	Rated Current (mA)	Characteristic Impedance
SMCMA2012-0R480G-M1		90 $\pm$ 20%	1.7 $\pm$ 20%	130	5	100

### ※Description of Part Name

SMCMA2012-0R480G-M1



Note:

1. Operating Temperature is -40°C ~ +85°C.