

## Type:SHCK1108C

### ◆ Product Description

- 11.7×11.7mm Max.(L×W),9.50mm Max. Height.
- Inductance Range: 0.47~2.00  $\mu$ H
- In addition to the standards versions shown here,
- custom inductors are also available to meet your exact requirements.

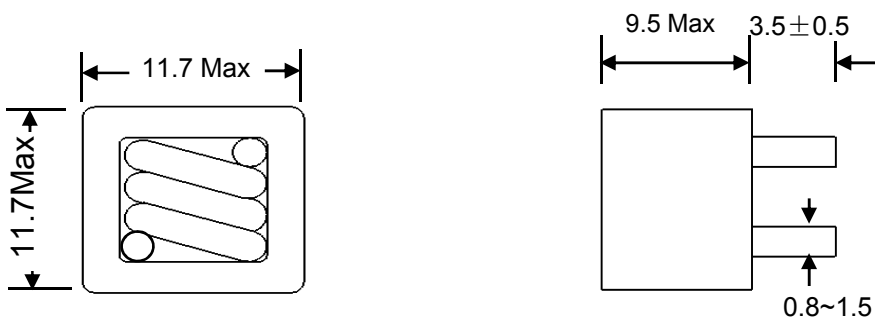
### ◆ Feature

- Ultra low cost
- Shielded construction
- High current rating up to DC 40Amp
- High frequency range up to 1.0 MHz
- Very low DC resistance
- All lead-free (RoHS)

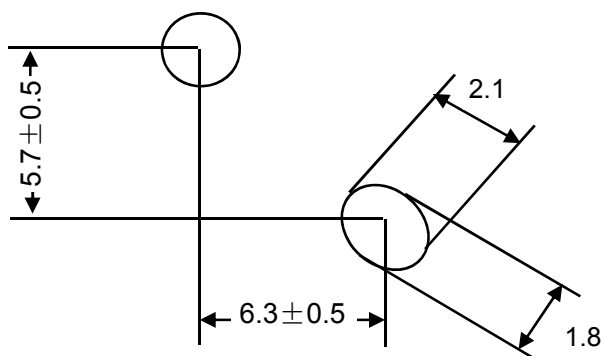
### ◆ Application

- Motherboards for laptop and desktop computers.
- DC/DC converter in distributed power systems or VRM applications.
- Inductor for general purpose use.

### ◆ Dimensions (mm)



### ◆ Land Pattern (mm)



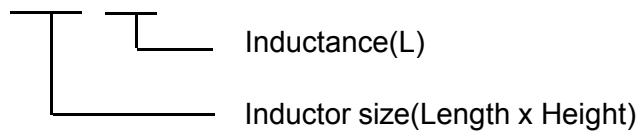
## Type:SHCK1108C

## ◆ Specification

Suntek Part Number	System code	LO(1) Inductance (μH)±20%	Test Condition (Volt/Hz)	DCR(mW) [Max]25°C	Saturation Current Isat(Amp) (Max)	Heat Rating Current Idc Amps Typical
SHCK1108C-R47M		0.47	1.0/100K	0.95	43	50
SHCK1108C-R60M		0.60	1.0/100K	0.95	43	50
SHCK1108C-R80M		0.80	1.0/100K	1.60	38	45
SHCK1108C-1R0M		1.00	1.0/100K	1.60	36	35
SHCK1108C-1R5M		1.50	1.0/100K	2.20	34	25
SHCK1108C-2R0M		2.00	1.0/100K	4.00	26	30

## ※Description of Part Name

SHCK1108C-R47M



## Note:

- 1.Lo test parameters:100KHz,1.0Vrms,0Adc.
- 2.Saturation current that will cause L0 approximately 20% rolloff with 25°C ambient temperature.
- 3.Heating current that will cause an approximate ΔT of 40°C without core loss.